
Agilent E5052A Firmware Update

This appendix describes how to update the E5052A firmware. When you want to update the E5052A firmware, refer to this appendix.

Firmware Update

Required Equipment

- E5052A (with keyboard and mouse).
- Four blank floppy disks (DOS format).

How to make E5052A Firmware Installation Disk

The following is the procedure to make the E5052A Firmware Installation Disk.

Step 1. Copy the following files from Agilent Technologies web site to the four floppy disks using your computer's FDD.

- disk1 (1 of 4) -- E5052.msi, Setup.vbs
- disk2 (2 of 4) -- E50521.cab
- disk3 (3 of 4) -- E50522.cab
- disk4 (4 of 4) -- E50523.cab

How to update the E5052A firmware

It is possible to update the E5052A firmware, but not the following software by this procedure.

- OS (Operating System)
- VBA (Visual Basic for Application)
- Calibration Constant Data

The following is the procedure to update the E5052A firmware.

Step 1. Prepare the E5052A firmware installation disks (four disks).

Step 2. Connect the mouse and the keyboard to the E5052A rear panel. Then turn the E5052A on.

Step 3. Exit from the E5052A Measurement Display.

1. Press **System** key.
2. Press **Service Menu - Administrator Menu** on the menu bar, and the Password dialog box will appear.
3. Enter the password **E5052** into the Password box.
4. Press **Exit E5052A - OK** on the menu bar.

Step 4. Double-click the “**My Computer**” icon on the Windows desktop.

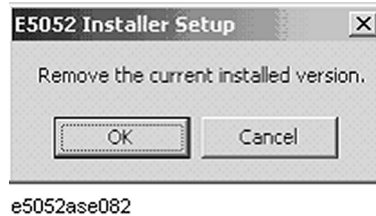
Step 5. Insert the E5052A firmware installation disk1 (1 of 4) into the FDD of the E5052A.

Step 6. Double-Click the “**3 1/2 Floppy [A:]**” icon.

Step 7. Remove the old version of the firmware using the following procedure.

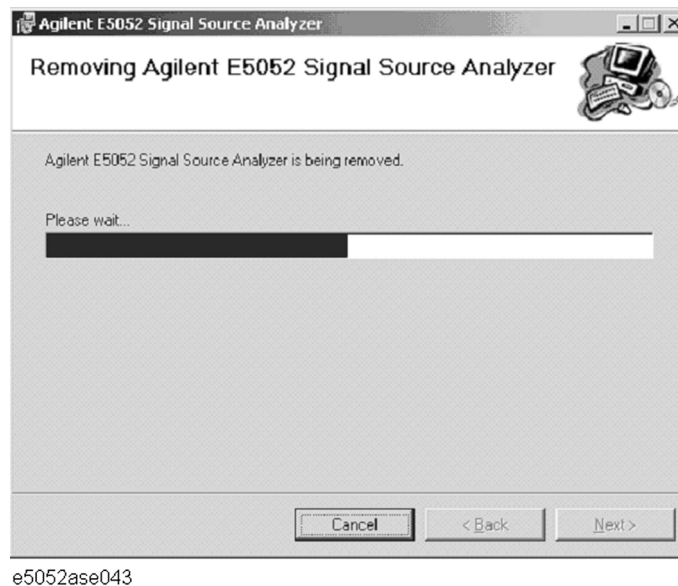
1. Double-Click “**Setup.vbs**” icon. The E5052A Setup Wizard (uninstall) will start automatically as shown in Figure 1.
2. Click on the **OK** button as shown in Figure 1.

Figure 1 E5052A Setup Wizard(uninstall)



3. Please wait until “Uninstall Wizard” (Figure 2) disappears.

Figure 2 E5052A Uninstall Wizard



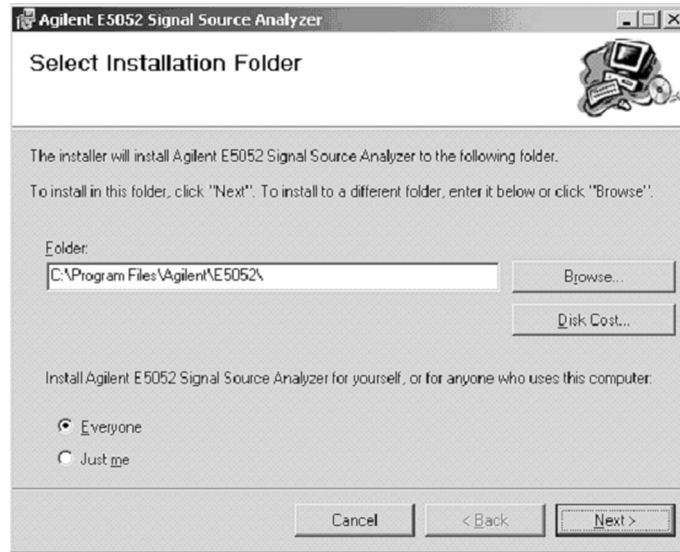
Step 8. Install the new version of the firmware using the following procedure.

1. After the disk1 installation is finished, insert the firmware installation disk2 “E50521.cab” into the FDD of the E5052A, then click **OK**.
2. After the disk2 installation is finished, insert the firmware installation disk3 “E50522.cab” into the FDD of the E5052A, then click **OK**.
3. After the disk3 installation is finished, insert the firmware installation disk4 “E50523.cab” into the FDD of the E5052A, then click **OK**.
4. The E5052A Setup Wizard will start automatically as shown in Figure 3.

Agilent E5052A Firmware Update Firmware Update

Figure 3

E5052A Setup Wizard (install)

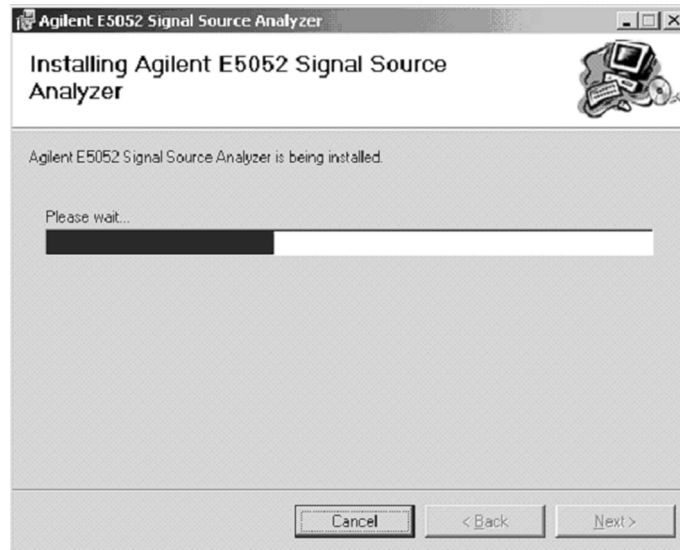


e5052ase044

5. Click on the "Next" to continue the firmware installation on the E5052A Setup Wizard as shown in Figure 3.
6. Please wait until "Install Wizard" (Figure 4) disappears.

Figure 4

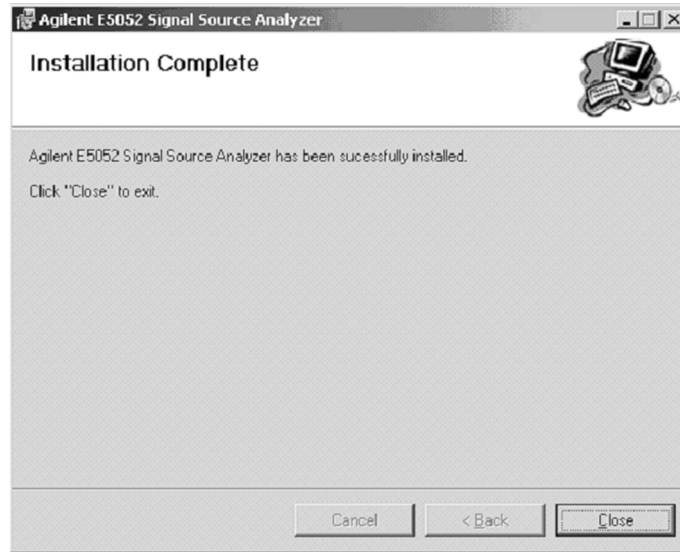
E5052A Install Wizard



e5052ase045

7. Since Figure 5 is displayed after installation is completed, please push the "Close" button.

Figure 5 E5052A Setup Wizard (Completed)



e5052ase046

- Step 9.** Double-click "E5052A" icon on the Windows desktop, and the measurement screen will appear.
- Step 10.** Turn the E5052A off, and then turn the E5052A on.
- Step 11.** Press **[System]** - **Product Information**. Confirm the firmware revision you have just installed.

Agilent E5052A Firmware Update
Firmware Update